

ITINERARY
FOR
Anthony and Donna Sessa
William and Nancy Gearhart

Kenya, Tanzania South Africa and
Victoria Falls, Zimbabwe

February 14 – March 04, 2008

In association with **CLASSIC TRAVEL & TOURS**

- FEB 14 THU NEWARK / AMSTERDAM**
Your exciting African holiday begins today as you depart Newark aboard your Northwest flight to Amsterdam.
- Newark / Amsterdam Northwest flight #64 4:40pm - 6:00am +1*
- FEB 15 FRI AMSTERDAM / NAIROBI, KENYA**
Arrive into Amsterdam this morning and connect to your ongoing Northwest flight # to Nairobi.
- Amsterdam / Nairobi Northwest flight #8565 10:30am – 8:10pm*
- Jambo na Karibu! Hello and welcome to Nairobi, or in the Maasai language, "place of cool waters". You are welcomed at the airport this evening by our representative, and then driven to your hotel. Enjoy dinner at your hotel tonight.



ACCOMMODATIONS: NGONG HOUSE

This beautiful, luxurious and romantic home stay gives the impression you are out in the African bush – yet you are only 20 minutes away from Nairobi.

Guests stay in imaginative wooden tree houses facing the distinctive Ngong Hills. These are not just ordinary tree houses. They are double storied, fantastic creations with superb attention to detail and every comfort imaginable. Stained glass windows, fully stocked bar, brass showerheads, comfy couches, hand made furniture and lamps. Cupboard doors have been fashioned from old Arab ships. Big windows make the most of the view, and a small kitchen allows the staff to serve your meals in the privacy of your own tree house.

The five thatched tree houses are spacious, well-spaced and hidden from each other by plenty of natural vegetation. One of the tree houses is lower and requires less climbing. Another is suitable for families, as it can accommodate two extra beds. The tree houses are named for the four points on the compass and are decorated accordingly. There are also two rooms in the main house suitable for older persons or those with difficulty climbing.

Guests have full use of the 10 acre grounds, including the swimming pool and adjoining bar and dining room. Breakfast and lunch can be served on the shady lawns, cocktails are served by the campfire, and dinner is served in an open-sided thatched building with fireplace and candles. The food is excellent, prepared by the owners with great attention to detail. For a luxurious, romantic and very special stay in Nairobi, Ngong House is the place. (D)

IMPORTANT NOTES FOR FLYING TO THE MASAI MARA

Luggage restrictions for flights to the Masai Mara are (15kg) 33 pounds per person (including photographic equipment). Please pack in soft-sided bags. Your excess will be taken back to your Nairobi hotel and stored. This restriction is rigidly enforced.

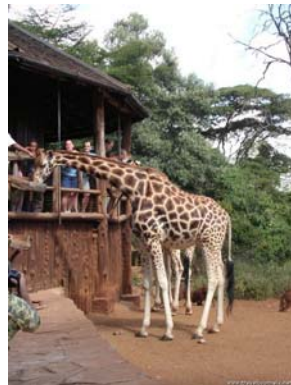
HARD SIDED AND/OR OVERWEIGHT LUGGAGE CAN NOT BE ACCEPTED ON LIGHT AIRCRAFT.

FEB 16 SAT

NAIROBI / MASAI MARA

Enjoy breakfast this morning, afterwards at approx at 9:00am you will be met by your driver (pick up time to be reconfirmed with the driver upon arrival in Nairobi)

Following the line of Ngong Hills, you pass through Ngong Village and continue to the Karen Blixen Museum, contained in the house that was her home for many years. A considerable effort was undertaken to retrieve much of the original furniture, which was sold off upon her return to Denmark. The area is now a green residential neighborhood, named Karen, in her honor.



The tour continues with a drive through the residential area of Langata to the Giraffe Center, situated in a rare indigenous forest on Nairobi's western boundary. The Center is located on the estate of Betty Leslie-Melville's Giraffe Manor and is the headquarters for the African Fund for Endangered Wildlife and the "home" of Daisy, the famous Rothschild giraffe and her relatives.

A specially designed observation platform offers you the opportunity to feed the full grown giraffe from your own hands; it's an experience you won't forget. Be sure to bring your camera for some superb photographic opportunities.

****Note: Remember to pack soft bags for the next 6-nights stay on safari. The driver will store excess luggage at Nairobi office.**

Afterwards, you will be transferred to Wilson Airport to join the group that will be arriving at noon on Ethiopian airlines into Kenyatta International airport.

The SafariLink flight departs Wilson airport at 3:00pm arriving at 4:00pm to the fabulous Masai Mara, Kenya's premier game reserve. Based in an area of over 1500 square kilometers in Kenya, Masai Mara country is a mixture of savannah plains and riverine forest.

Upon arrival, you will be met and transferred to your lodge (drive time approx. 25 minutes). Enjoy afternoon tea in camp. This evening enjoy a special welcome dinner.



The Mara supports a huge variety of wildlife including huge herds of plains game, black-maned lion, leopard, cheetah, giraffe, rhino and large numbers of elephant, along with several areas of dense hippo and crocodile populations in the bends of the traversing Mara River. It is also the home of over 450 bird species among which you will find vultures, marabou storks, secretary birds, crowned-cranes and eagles.



ACCOMMODATIONS: KICHWA TEMBO TENTED CAMP – Luxury tent
Overlooking the endless game-filled plains of the Masai Mara National Park in Kenya, Kichwa Tembo Tented Camp - an oasis of Hemingway-style safari tents - is nestled below the Olololo Escarpment on the fringe of a riverine forest.

The Camp comprises spacious safari tents with en-suite facilities, comfortable furnishings and private verandas with sweeping views over either the magnificent grasslands or the Sabarigo River.

Guest areas include a reception area, bar / sitting room, indoor / outdoor dining areas and shaded swimming pool, as well as a superbly appointed curio shop and gallery.

Besides being the setting for the ancient and often tragic spectacle of the Great Migration, other marvels of the Masai Mara include black-maned lions, rhino, cheetah, giraffe, elephant, red-tailed monkeys and a host of antelope. Twice-daily interpretive game-drives led by our highly trained and experienced rangers, bird watching and bush-walks with resident guides and naturalists reveal the wonders of the Mara. (D)

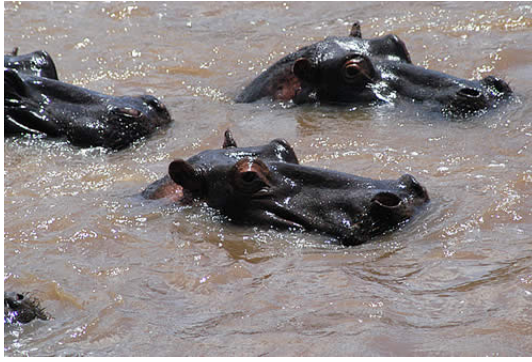
*****Note:** At Kichwa Tembo two scheduled game drives, three meals a day, tea and coffee are included (Alcoholic beverages or soft drinks are not included)

****Time of departure for each event will be given to you by the camp personnel****

FEB 17 SUN
FEB 18 MON
FEB 19 TUE

MASAI MARA

Enjoy morning and afternoon game viewing activities. Your camp is in a secluded part of the Mara, which allows you to enjoy undisturbed game viewing. When not game viewing, you may relax by the swimming pool or sip a cool drink on your private verandah while watching hippo cavorting in the river. At the end of the day, you return to your camp for a sumptuous meal and an opportunity to share the day's adventure.



There are many optional activities available from your lodge.

OPTIONAL HOT AIR BALLOONING OVER THE MASAI MARA

Awaken in the soft early hours of dawn for a unique experience, a balloon safari over the game filled plains and riverine forests of the Mara. You will float effortlessly for an hour or more, mostly at tree top level, giving plenty of time to view and photograph the wildlife and to enjoy the superb scenery. Upon touch-down a three course English breakfast is served along with champagne. Return to your lodge or camp later this morning.

ACCOMMODATIONS: KICHWA TEMBO TENTED CAMP (B,L,D)

FEB 20 WED

MASAI MARA / NAIROBI / KILIMANJARO, TANZANIA

A final game run this morning to imprint the images of Kenya in your mind, then you are transferred to the airstrip for the scheduled SafariLink flight departing at 11:00am and arriving at Wilson Airport at 12:15pm. You will then connect to your Regional Air flight departing at 1:00pm arriving into Kilimanjaro International Airport at 1:45pm. After clearing customs and immigration, you board the ongoing Regional Air flight departing at 2:30pm to the Manyara airstrip arriving at 3:35pm

On arrival you will be met and continue your journey as you travel overland (approx. 1 & a half hour drive) to the great Ngorongoro Crater, where the next two nights are spent at a lodge on the crater rim.



ACCOMMODATIONS: NGORONGORO CRATER LODGE - suite

Perched on the edge of the ancient crater rim above the swirling mists, the architectural masterpiece of Ngorongoro Crater Lodge is a magnificent return to the noble elegance of the traveling colonials. Inspired in design by the Masai manyatta, forms three intimate villages – a fusion of earth and baroque luxury integrated into the dramatic rim of the crater. The villages of six to twelve private cottages command dazzling views of the crater floor 500 meters below, introducing a new level of sophistication to Tanzania in accommodation and service standards.

North and South Camp have 12 suites each, while intimate Tree Camp has six suites. All have an en suite bathroom and chandelier-lit bath-tub and shower. Each suite is discreetly tended by a personal butler, who will bring you tea in bed, stoke your fireplace and draw your bath, scattering the water with rose petals, ready for your enjoyment.

Each of the exclusive camps operates independently. They each have a central living area and viewing decks overlooking the awesome crater. Ancient African nights are evoked by the large fire bowls that flank the entrance to each of the living and dining areas. There is a communal curio shop and gallery. African artifacts and clothing are on sale at the gallery/Maasai Market.

Pan-African cuisine is served in the outdoor dining area or dining room, where evening log fires flicker between silver screens. The domed dining room, with its welcoming fireplace, crystal, silver and massive wooden platters, treat every meal as a special occasion. Truly food for the soul, this mélange of traditional African recipes is enhanced by Africa's famous spices - saffron, vanilla, cumin and nutmeg. (B,L,D)

****Note:** Following are included during your stay at Crater Lodge;
Three meals daily, soft drinks, house wines, local brand spirits and beers, tea
And coffee, scheduled safari activities, refreshments on game drives, laundry



FEB 21 THU

NGORONGORO CRATER

This morning descend to the crater floor some 2000 feet below the rim for a half day of exploring in this extinct, collapsed volcano. Within the 100 square miles of the crater is one of the densest concentrations of game to be found in Africa. Acclaimed as one of the wonders of the Natural World, the Crater is a veritable haven for wildlife.



Elephants amble along well-worn tracks while large prides of lion jealously guard their territorial domain. Gazelle quietly gaze, surrounded by zebra and wildebeest, whilst the endangered rhino, ever vigilant, feeds not far from the lake. Lake Magadi, the permanent water source with Ngorongoro Crater, often seems to be tinged pink when the throngs of flamingo congregate for food. Ngorongoro bird-life matches the animal population for variety and species.

ACCOMMODATIONS: NGORONGORO CRATER LODGE (B,L,D)

NOTE: For travel to **South Africa**, please ensure that your passport has a minimum of two blank visa pages facing each other for each entry into South Africa, (MUST HAVE THE WORD "VISA") to enable entry permit to be issued. **Passport must be valid at least six months beyond the intended period of stay in South Africa.**

FEB 22 FRI

NGORONGORO CRATER / KILIMANJARO / NAIROBI / JOHANNESBURG, SOUTH AFRICA

Your East Africa safari comes to an end as you are transferred back to the Manyara Airstrip for your Regional Air flight departing at 12:15pm to Kilimanjaro International Airport, arriving at 1:10pm. After clearing customs and immigration, you will connect to your Regional air flight departing at 2:00pm arriving into Wilson Airport at 2:45pm. Upon arrival you will be met and transferred to the Norfolk hotel for lunch.

Afterwards, you will be transferred to Jomo Kenyatta International airport for your onward Kenya Airways flight to Johannesburg.

**Nairobi / Johannesburg Kenya Airways flight #462 8:30pm – 11:50pm*

Upon arrival in Johannesburg late this evening, you will be welcomed at the airport and assisted to check into your hotel for an overnight stay. Your hotel is located in the airport complex, within walking distance of the arrivals terminal.



ACCOMMODATIONS: AIRPORT SUN INTER-CONTINENTAL JOHANNESBURG

This hotel has an excellent location just 50 meters from arrivals and departures at Johannesburg International Airport, and is the only hotel within the airport offering five-star facilities.

Accommodations include luxury guest rooms, executive rooms and suites. All rooms are air-conditioned, and have interactive TV system offering airline flight information, satellite TV, direct dial telephone, voice mail and wake-up call facility. The work desk has a modem connection and cell phone re-charger. Bathrobes are provided as well as a hairdryer, coffee/tea maker, separate wardrobe, private bathroom plus shower, and mini bar.

The hotel has a first class restaurant that is open 24 hours with an informal atmosphere, offering modern cuisine, from breakfast through to late-night a la carte dining. The cocktail bar is an ideal meeting place for the international traveler. In-room dining with an optional 'flight-friendly' menu is available.

There is a health and relaxation center with gymnasium, indoor pool, steam bath and a masseur to soothe away the tensions of air travel. Golf and tennis are nearby. (B)

Please note that visas are required for **Zimbabwe**, and are issued upon arrival at the first port of entry. The fee on arrival in Zimbabwe is USD\$30 for a single entry and USD\$45 for a double entry, payable in US Dollars. Fees are subject to change.

Zimbabwe departure tax is USD\$20.00 payable in US Dollars upon departure from Zimbabwe.

Also note: While in **Zimbabwe**, Hotel bills, meals not included as part of your tour, purchases, etc. must be paid with foreign currency (USD, GBP, etc.), in cash or travelers checks. It is best is to travel with small denominations foreign currency for extras, for any purchases. Hotels only accept payment in foreign currency. Change will not be given in foreign currency, but only in Zimbabwe dollars which is not transferable back to foreign currency, and will not be of value when you exit the country.

Credit cards are rarely accepted, and if they are, will be charged at an inflated exchange rate. It is strongly recommended that you avoid using them altogether, while in Zimbabwe. Diners Club and American Express credit cards are only accepted in minimal outlets and some establishments will not accept any credit card payment. MasterCard/Visa are not accepted at hotels, restaurants, shops, etc. It is advisable that you take into Zimbabwe a sufficient supply of recently minted US bills, in denomination of \$1, \$5, \$10 and \$20. Hotels will also only accept US\$ notes printed after 2001.

FEB 23 SAT

JOHANNESBURG / VICTORIA FALLS, ZIMBABWE

After checking out of the hotel this morning, we will walk to the International Departures Terminal to check in for your flight to Victoria Falls. On arrival, you will be met and transferred to your reserved hotel.

**Johannesburg / Victoria Falls*

British Airways flight #6285

11:25am – 1:05pm

This evening, enjoy dinner at either the Livingstone Restaurant or Jungle Junction. (Drinks are not included)

Stanley's Terrace is suggested for light meals throughout the day. Traditional high tea is served every afternoon (strongly recommended), with spectacular views of the Victoria Falls bridge and the Falls themselves. Later enjoy the hotel's famous cocktails or a gin and tonic at Stanley's Bar whilst listening to the roar of the mighty Falls.



ACCOMMODATIONS: VICTORIA FALLS HOTEL - Deluxe room

Overlooking one of the world's seven natural wonders – the incomparable Victoria Falls – The Victoria Falls Hotel is a man-made wonder with its own legendary past. As a world-renowned property set in a place of such breathtaking natural beauty, The Victoria Falls Hotel has, over the century, hosted heads of state as well as international celebrities drawn to its site, charm and service.

Guests at this landmark hotel can take in the same breathtaking views that captivated intrepid explorer David Livingstone when he discovered the falls in 1855. Against the tremendous thundering background of the waterfall with its rolling spray and roaring water, a very civilized vision of a luxury hotel has evolved over the last century.

The first steam train arrived in Victoria Falls in 1904 and the influx of workers and travelers led to the construction of The Victoria Falls Hotel soon after. Originally a temporary wooden structure with corrugated iron roof, the hotel underwent several major re-constructions, being rebuilt in brick in 1917 and closing in 1996 for a major modernization of the exterior and interior. Today, The Victoria Falls Hotel combines the charm of its original era with the comforts and conveniences of today.

The courtyard entrance to the hotel overlooks tranquil lily ponds, lush flowering shrubs, bright flowers and swaying palms. Stately mango trees provide shady and serene places to relax. Colonial elegance permeates the marble-floored entrance, main lounge and Palm Lounge as well as the Bulawayo Room, which offers calm and seclusion. A stately Edwardian charm from a bygone age is recaptured in the rooms and suites with colonial prints, four-poster and canopied beds, antique furniture and well chosen artefacts.

Modern amenities mingle well with the traditional feeling ~ these include personal safes, bathrobes, satellite television and thoughtfully, umbrellas for the convenience of guests. Overlooking a delightful courtyard the new Stables Wing mirrors the colonial décor with luxurious bathrooms highlighted by free-standing ball and claw tubs and walk-in showers.

Set among the landscaped gardens is the glorious swimming pool with inlaid stonework and a cascading fountain. After a day of sightseeing or relaxing, guests can enjoy a gourmet dinner and dancing in the elegant Edwardian Livingstone Room.

Each afternoon on Stanley's Terrace a very British high tea service is offered ~ this gives guests a unique opportunity to relax and enjoy the spectacular view. For an even closer look guests can meander down a private path from the hotel to the falls.

A curio shop on-property specializes in gifts such as clothing, curios, silverware, and colonial memorabilia.

There are various options for guests wishing to dine at the hotel: the splendid Livingstone Room, for fine dining and dancing in the evening; Stanley's Terrace, overlooking the famous Victoria Falls Bridge, offers snacks, lunch, high tea, cocktails and dinner under the stars, or for something more "African", The Jungle Junction Summerhouse has a nightly barbecue with ethnic entertainment. Let's not forget Stanley's Bar! (B,D)

FEB 24 SUN

VICTORIA FALLS

During your sightseeing excursion this morning, you will visit the Craft Village which depicts scenes of traditional African life. The Victoria Falls Craft Village is a curio hunter's paradise. With five to six football fields of curio in any shape, size and budget you are sure to get that something special. Feel free to negotiate prices.



Afterwards, continue on a conducted tour of Victoria Falls. Your guide will lead you through the natural rain forest to selected vantage points from where you will see the five main cataracts that comprise the Falls.



Later this morning, **William** will depart on his helicopter excursion while **Nancy, Anthony and Donna** will enjoy the remainder of the day at leisure for optional activities, relaxing or for best shopping we suggest the Elephant Walk Mall which is right by the craft market.

William: Enjoy a bird's eye aerial view of the Zambezi River, the Falls and the Gorges, by helicopter. For a different perspective, view the Zambezi from the air in all its beauty as it flows to the Falls and plunges over the precipice, throwing up a cloud that sometimes reaches 300 meters high. The excursion also gives an insight into the development of the falls and the gorges. Your scenic flight allows for two passes over the Falls, in different directions, allowing all the passengers the opportunity to view the Falls. The 30 minute flight also includes a game flight over the Zambezi National Park.

This evening you will be met at your hotel at 5:30pm and transferred for the dinner cruise.

We have made a new breakthrough in the region by being allowed by National Parks to dine on the river at night. While all sunset cruise boats return to shore we remain afloat the mighty Zambezi to dine and enjoy the solitude of this majestic river.

On board the Fish Eagle cruise vessel we depart a half hour before sunset and gently make our way upstream of the mighty Zambezi. Watch the sun fade and the colors of the river transform enjoying cocktails and snacks before dinner.



There is a special magic to dining on the river at night with the sights and sounds of the mainland, the rhythm of the Falls in the background, the night sounds of the myriad of insects and night birds as well as the grunting hippo's, that lend themselves to an almost surreal quality. Dinner is a three course affair prepared by top class Executive Chefs and a full bar is available.

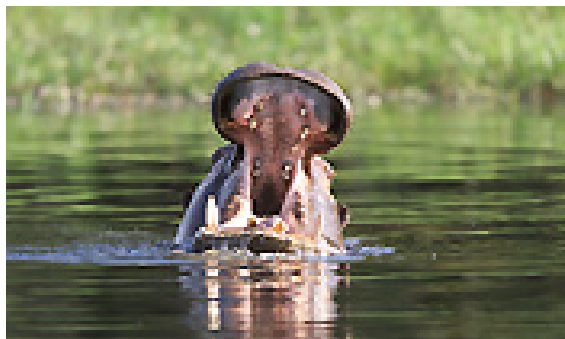
****Note:** All local beverages are included; also included are; Smirnoff, Gilberts Gin, Brandy Boll, Two Keys Whisky

ACCOMMODATIONS: VICTORIA FALLS HOTEL – deluxe (B,D)

FEB 25 MON

VICTORIA FALLS

This morning enjoy a half day game drive in a rugged 4 x 4 safari vehicle into the Zambezi National Park, home to the elephant, buffalo, hippo, sable and more.



Afterwards **Nancy**, will enjoy the remainder of the day at leisure for independent exploration of this scenic area, shopping or just relaxing. **William, Anthony & Donna** will depart this afternoon on his elephant back excursion.

William, Anthony and Donna: At 2:00pm this afternoon, you will begin your exciting unusual elephant back excursion. This is an elephant experience rather than an elephant safari, (although game and birdlife can be encountered while on the ride). Guests are encouraged to interact with the elephants and experience them close up, as well as ride them through the African bush. The excursion lasts 3-4 hours and begins with a half hour transfer from Victoria Falls to the private estate; followed by a briefing. Training is an integral part of the elephant's life and the grooms are friendly and knowledgeable. The elephants are then saddled; two guests and a groom ride on each elephant. The elephants follow game trails, led by an armed guide on foot. In the morning, after the ride, a bush breakfast is supplied, and in the afternoon sundowners and snacks are on offer. Guests are then transferred back to the hotels in the Falls. Suggested clothing includes; long pants or jeans, a good hat and sensible walking shoes.



Dinner this evening will be enjoyed at either the Livingstone Restaurant or Jungle Junction. (Drinks are not included)

ACCOMMODATIONS: VICTORIA FALLS HOTEL – deluxe (B,D)

FEB 26 TUE

VICTORIA FALLS / JOHANNESBURG / CAPE TOWN, SOUTH AFRICA

Today you are transferred to the airport in time for the departure of your flight bound for Johannesburg. Upon arrival in Johannesburg you will be met by our representative and assisted to the Domestic Terminal for your connecting flight bound for Cape Town, South Africa's "Mother City."

**Victoria Falls / Johannesburg*

British Airways flight #6282

1:45pm – 3:25pm

**Johannesburg / Cape Town*

British Airways flight #6429

5:00pm – 7:10pm

You are welcomed on arrival by our representative and transferred to your hotel.

We strongly suggest having dinner at the hotel's Cape Colony Restaurant, which combines fine dining with impeccable service amid an elegant interior, with live music each evening. The menu features contemporary South African food with an interesting Asian influence, while the wine list was recently awarded the Diners Club Award of Excellence

When Jan van Riebeeck arrived at the Cape in 1652, the territory was occupied solely by nomadic Hottentots and Bushmen, eking out a living from the land. Van Riebeeck's first undertaking was to establish a settlement and a means of supplying passing merchant ships with fresh supplies. The settlement soon earned the title "Tavern of the Seas". To this day, Cape Town maintains a reputation for friendly hospitality.



With its majestic Table Mountain backdrop, Cape Town is one of the most beautiful cities in the world. An eclectic mix of architectural styles reflects the tastes and dictates of the past – and the more functional demands of the 20th century. The city's Edwardian and Victorian buildings have been meticulously preserved, and many outstanding examples of Cape Dutch architecture are found in the city and its environs.

Cobblestone streets, mosques and the flat-roofed pastel homes of the Malay Quarter enhance a cosmopolitan ambience, and the Victoria and Alfred Waterfront evokes images of the seafaring activities of the 19th century. For a closer look at life at the Cape in earlier times, interesting historical collections are on display in several museums.

Cape Town's shopping options invite you to endlessly browse – and buy. At the Victoria & Alfred Waterfront, the Victoria Wharf Shopping Center caters for most shopping needs, from designer clothing boutiques and fashion accessory shops to gift stores and food outlets. The Waterfront Craft Market is one of the largest indoor craft markets in South Africa with quality crafts including pottery, leatherwork, furniture, educational toys, clothing, glass art and African arts and crafts. Situated adjacent to Victoria Wharf, The Red Shed Craft Workshop offers a unique interaction between shoppers and those making the wares. Here, you can order a custom made item and watch 23 specialty crafters at work.



ACCOMMODATIONS: MOUNT NELSON HOTEL – superior room

The Hotel's Prince of Wales archway, built in 1924, is synonymous with the Cape's tradition of hospitality. Set at the foot of its private, palm-fringed avenue, this famous landmark stands as a welcome not only to the Mount Nelson Hotel, but also to the beautiful beaches, Winelands and mountains of the Cape.

For almost 100 years, visiting members of Royal families, international and local statesmen, celebrities and businessmen have preferred to stay at the Mount Nelson, where they are assured of privacy, comfort and care. Each of the 28 suites and 131 bedrooms are individually furnished and provided with fully appointed private bathrooms and air conditioning. In addition, each is equipped with television, a refrigerator and international touch-dialing telephones.

The superb variety of fish, fruit and wine from the abundant ocean, valleys and vineyards of the Cape constantly inspire our chefs. Add the exotic touch of traditional Malay cuisine, with its French, Dutch and Eastern influences, and experience the true taste of the Cape. Enjoy the young, international style and inspired cuisine of the Cape Colony or the tropical fruits which are a feature of the buffet breakfasts at our Oasis Restaurant with its lavender-bordered terrace overlooking the swimming pool and magnificent gardens. (B)

FEB 27 WED

CAPE TOWN – FULL DAY PENINSULA TOUR

As we depart Cape Town we will do a quick overview of the city. See for yourself how this spectacular southern tip of Africa became known as the 'Fairest Cape'. The private tour begins with a drive past the pristine beaches of Camps Bay, Clifton and Llandudno – currently the hottest real estate in the world – to Hout Bay, a functioning harbor and heart of the local crayfish industry. There will be stops made to visit local craft markets.



After a stop for lunch at Black Marlin seafood Restaurant, it's on to the Cape of Good Hope Nature Reserve and its scenic viewing point. The spectacular sea and mountain views are reason enough to make the 66km trip from Cape Town. Amid the rocky landscape – home to mountain zebra, eland and ostriches - blooms magnificent Cape flora. Continue along the coastline to the beautiful Boulders Beach where you can get close to a colony of penguins. We drive through the naval port of Simon's Town, the country's third oldest European settlement. Return to the hotel in the late afternoon.

Today please make sure you discuss with the concierge for best dining experience in town. Ninja – this is one of the top choice restaurants in Cape Town, and they have game (Springbok and Ostrich) on the menu.

ACCOMMODATIONS: MOUNT NELSON HOTEL – superior room (B,L)

FEB 28 THU

CAPE TOWN - HALF DAY WINELANDS

Escape to the beauty and tranquility of the Cape Winelands as you depart on your half day tour. A stop will be made at a well-known wine estate where you will be taken on a cellar tour. Drive through Stellenbosch and a walk down picturesque Dorp Street. Stellenbosch is the second oldest town in South Africa, founded in 1679 by the Dutch East India Company, and today is one of South Africa's most attractive and best-preserved towns. Dorp Street has a number of carefully restored historic buildings, and the Stellenbosch Village Museum sheds light on the lifestyle of the inhabitants during the 17th and 18th centuries. Your day will end with wine tasting and wine purchasing before heading back to your Cape Town hotel.



Return to your hotel by midday. Relax at your hotel for the rest of the day, or you may enjoy some shopping. We suggest for best shopping to visit Victoria and Alfred waterfront, which is approx 15-minute from your hotel.

This evening you will be transferred to Cellars Hohenort for a farewell seven course dinner at the Greenhouse Restaurant. Cordon Bleu chefs conjure up sumptuous meals while the wine cellar is full of a variety of South African and European wines (drinks not included. On own account). After dinner you will be transferred back to your hotel. (B,D)

Please ensure that you have packed an overnight bag (weight limit of 44 pounds) for your 3-night stay at your game lodge. Please pack accordingly. You may store the remainder of your luggage at a baggage storage facility at Johannesburg International Airport, for collection by you after your game reserve stay (on own account).

LOCK-UP LUGGAGE, the facility where you may store excess luggage, is located in the Upper Level of the Basement Parking at Johannesburg Airport. There are signs throughout the airport to direct you to the facility.

Lock-up Luggage is open 24 hours a day, 7 days a week. Rates are charged per item stored, per 24 hour period, for your own account. We suggest you pack conservatively.

FEB 29 FRI

CAPE TOWN / JOHANNESBURG / HOEDSPRUIT / MANYELETI GAME RESERVE

Early this morning you will be transferred to the airport for your flight to Johannesburg, where you will be met and assisted with storing your excess luggage before boarding your flight to Hoedspruit airport in the Kruger National Park.

<i>*Cape Town/ Johannesburg</i>	<i>Nationwide flight #703</i>	<i>8:00am – 10:00am</i>
<i>*Johannesburg / Hoedspruit</i>	<i>British Airways flight #1221</i>	<i>12:20pm – 1:10pm</i>

You will be met on arrival and transferred by road to the Manyeleti Game Reserve located in the Limpopo Province south of the Sabie Sand Reserve and on the fenceless eastern boundary the reserve is open to the Kruger National Park.



ACCOMMODATIONS: TINTSWALO SAFARI LODGE – Luxury Suites

Tintswalo in the Shangaan language describes the intangible feeling of warmth, love, pride and gratitude you feel upon accepting a beautiful gift. This 5-star luxury safari lodge in Manyeleti Game Reserve is inspired by these emotions and the caring and efficient staff strives to create an unforgettable physical embodiment of this ancient Shangaan blessing. The lodge is set upon the banks of a dry riverbed, among a grove of ancient Sycamore fig trees.

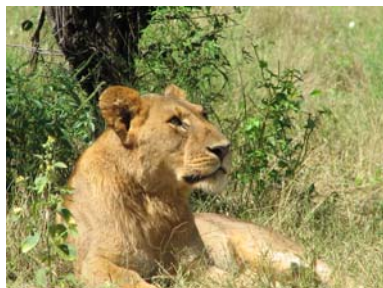
Tintswalo Safari Lodge blends into the surrounding bush; the main complex, as well as the individual suites, overlooks a waterhole frequented by abundant game.

Tintswalo Safari Lodge offers 5 standard ultra luxury suites and a honeymoon suite as well as a 2 bedroom self-contained Presidential Suite. All the spacious air-conditioned suites are positioned along the seasonal Nwaswitsontso River with a view of the waterhole below the majestic Sycamore grove. The indoor / outdoor shower leads off from the spacious bathroom, which opens out onto a private deck of your accommodation. The exclusive suites are decorated to recall the pioneering times of explorers; with every modern luxury added. (B,L,D)

**MAR 01 SAT
AND
MAR 02 SUN**

MANYELETI GAME RESERVE

You'll have morning and afternoon game viewing in this spectacular wildlife kingdom. Tintswalo's schedule is infinitely flexible. The day's activities are planned around you, the guest.



A typical day would start with an early morning game drive and perhaps a picnic breakfast, followed by an al fresco lunch on the main lodge deck; the afternoon is at leisure allowing time for a relaxing spa treatment. The evening drive continues into the night and your day is rounded off by a crystal candlelit dinner.

ACCOMMODATIONS: TINTSWALO SAFARI LODGE (B,L,D)

MAR 03 MON

MANYELETI GAME RESERVE / HOEDSPRUIT / JOHANNESBURG / AMSTERDAM

An early morning wake-up call and out into the bush on the morning safari in search of animals not seen the day before. Return to camp for breakfast, and then transfer to the airport for your flight back to Johannesburg.

On arrival in Johannesburg, you will retrieve any stored luggage before checking in for your Northwest flight to Amsterdam this evening.

Please Note: Due to the length of your layover in Johannesburg, arrangements are being made for you to fill some of your time here. Details will be advised upon arrival in South Africa. (B)

**Hoedspruit / Johannesburg
Johannesburg / Amsterdam*

*South African Airways flight #1222
Northwest flight #592*

*1:55pm – 3:10pm
11:30pm – 10:00am+1*

MAR 04 TUE

AMSTERDAM / NEW YORK

On arrival in Amsterdam this morning, connect to your ongoing KLM flight to New York, and arrive home today with memories to last a lifetime!

Amsterdam / New York

KLM flight #641

1:30pm – 3:50pm

**** WELCOME HOME ****

***These flight details are accurate as of the time of printing and are subject to change. Reconfirm your flights 72 hours prior to departure directly with the airline.**

IMPORTANT NOTES FOR TRAVELLING IN TANZANIA:

A Yellow fever inoculation could be required for entry into Tanzania. Due to the constantly changing entry requirements, please check with the health department or your personal physician for up-to-date inoculation requirements.

It is suggested that you refrain from changing money at the border. Local escorts will assist you with any necessary money changes you may need to make upon arrival at your first night hotel.

While credit cards (Visa & MasterCard) are becoming readily accepted in Tanzania, you will not be able to draw cash against your credit card. It is suggested that you carry low denomination US cash for tipping (\$1.00-\$20.00) and either cash or travellers cheques (\$10.00 or \$20.00) for settling hotel bills. Many lodges and hotels are not able to accept larger denominations (\$50.00 or \$100.00).